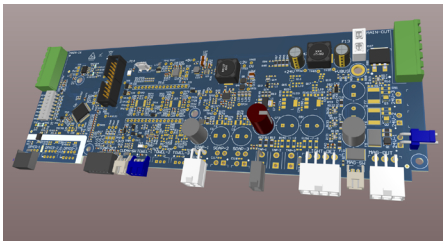


Case Study: **Control system redesign to reduce costs and assembly complexity**

Project Summary

The team here at Partner Electronics were asked to collaborate with our clients to redesign an existing commercial washroom control system to address cost, assembly, and scalability limitations.

The project focused on simplifying system architecture and enabling modular expansion while maintaining functionality.



Key Capabilities & Tools

System architecture redesign

PCB optimisation and consolidation

Communication protocol development (Modbus)

Design for manufacture and assembly

Project Outcome & Impact

Reduced manufacturing cost and simplified system assembly.

The redesign reduced PCB count and wiring complexity, improving build efficiency and reducing assembly errors.

A modular architecture was developed to enable scalable configurations without redesign, supporting a wider range of installations.

The system is easier to maintain and extend, improving long-term product viability.

**Engineering success into your product –
Enquire today.**