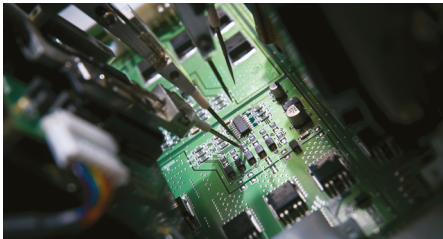


Case Study: Firmware development to extend medical device capability

Project Summary

Our team at Partner Electronics was asked to provide ongoing firmware development and support for a laparoscopic medical device used in keyhole surgery.

The work focused on extending functionality within an existing system while maintaining compliance and supporting continued product use across clinical environments. It also included improvements to the demonstration mode.



Key Capabilities & Tools

Embedded firmware development

System-level design within existing architecture

EN62304 compliance processes

Ongoing product maintenance and support

Project Outcome & Impact

Extending the functionality of an in-market medical device without hardware redesign.

New features were implemented within the existing system architecture while maintaining compliance with EN62304 processes.

A demonstration mode reduced the cost and complexity of product demonstrations, supporting its commercial use.

Ongoing development and support have enabled continued product evolution and long-term use in clinical settings.

**Bringing products to market – sooner:
Contact us today.**